

# theedge



## GIANT SCREEN MOVIE

No visit to the Blue Mountains is complete without experiencing The Edge Giant Screen movie on the six storey high screen.

Fly through mist filled valleys, plunge over waterfalls, raging waters, underground caves, ancient wilderness and the world's oldest living tree species – THE WOLLEMI PINE.

### SCREENS DAILY:

**10:20am, 11:05am, 12:10pm,  
1:30, 2:15, 5:30pm**

While at The Edge Cinema you can also use ample on-site parking for cars and coaches and excellent access for the aged and handicapped.

**225 Great Western Highway, Katoomba, 2780  
PH: (02) 4782 8900 [www.edgecinema.com.au](http://www.edgecinema.com.au)**

**5th August**

PAUL BETTANY JENNIFER CONNELLY



**12th August**



**5th August**



**12th August**



# theedge

## CINEMA

**WEEKLY FILM PROGRAM  
Thur 29th July- Wed 4th Aug  
OPENING THIS WEEK**



**FOOD INC**



**I AM LOVE**



**GET HIM TO THE GREEK**

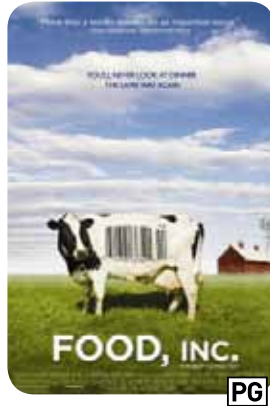
**[edgecinema.com.au](http://edgecinema.com.au)**

# THIS WEEK'S NEW FILMS

## FOOD INC

PG. 94mins. Documentary

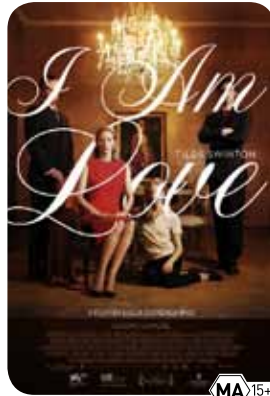
In Food Inc, filmmaker Robert Kenner lifts the veil on the nation's food industry, exposing the highly mechanized underbelly that's been hidden from the American consumer with the consent of the US government's regulatory agencies, USDA and FDA. The nation's food supply is now controlled by a handful of corporations that often put profit ahead of consumer health, the livelihood of the American farmer, the safety of workers and the environment. Food Inc reveals surprising - and often shocking truths - about what we eat, how it's produced, who we have become as a nation and where we are going from here.



## I AM LOVE

MA15+. 120mins. Drama  
Italian/German w/English subtitles

I am love (Io sono l'amore) tells the story of the wealthy Recchi family, whose lives are undergoing sweeping changes. Eduardo Senior, the family patriarch, has decided to name a successor to the reigns of his massive industrial company, surprising everyone by splitting power between his son Tancredi, and grandson Edo. But Edo dreams of opening a restaurant with his friend Antonio (, a handsome and talented chef.



At the heart of the family is Tancredi's wife Emma (Tilda Swinton), a Russian immigrant who has adopted the culture of Milan. An adoring and attentive mother, her existence is shocked to the core when she falls quickly and deeply in love with Edo's friend and partner Antonio, and embarks on a passionate love affair that will change her family forever.

## GET HIM TO THE GREEK

MA15+. 109mins. Comedy

Aaron Greenberg (Jonah Hill) gets things done. The ambitious 23-year-old has exaggerated his way into a dream job just in time for a career-making assignment. His mission: Fly to London and escort a rock god to LA's Greek Theatre for the first-stop on a \$100-million tour. His warning: Turn your back on him at your own peril. British rocker Aldous Snow (Russell Brand) is both a brilliant musician and walking sex. Weary of yes men and piles of money, the former front man is searching for the meaning of life.



## INCEPTION

M. 148mins. Crime/Thriller

Dom Cobb is a skilled thief, the absolute best in the dangerous art of extraction, stealing valuable secrets from deep within the subconscious during the dream state, when the mind is at its most vulnerable. Cobb's rare ability has made him a coveted player in this treacherous new world of corporate espionage, but it has also made him an international fugitive and cost him everything he has ever loved.

Now Cobb is being offered a chance at redemption. One last job could give him his life back but only if he can accomplish the impossible-inception. Instead of the perfect heist, Cobb and his team of specialists have to pull off the reverse: their task is not to steal an idea but to plant one. If they succeed, it could be the perfect crime. But no amount of careful planning or expertise can prepare the team for the dangerous enemy that seems to predict their every move. An enemy that only Cobb could have seen coming.

## KNIGHT & DAY

M. 109mins. Action

An action-comedy centered on a fugitive couple (Cruise and Diaz) on a glamorous and sometimes deadly adventure where nothing and no one - even themselves - are what they seem. Amid shifting alliances and unexpected betrayals, they race across the globe, with their survival ultimately hinging on the battle of truth vs. trust.

## PREDATORS

MA15+. 107mins. Action

A group of hardened killers are hunted on an alien planet in producer Robert Rodriguez and director Nimród Antal's entry into the popular sci-fi action franchise. Mercenaries, murderers, gangsters, and convicts, they were the most feared men on Earth. But now they're a long way from home, and when the predators become the prey, fearless mercenary Royce (Adrien Brody) prepares for the fight of his life. And he's not alone.

## TOY STORY 3

G. 102mins. Animated/Family/Comedy

Woody, Buzz and the whole gang are back. As their owner Andy prepares to depart for college, his loyal toys find themselves in daycare where untamed tots with their sticky little fingers do not play nice. So, it's all for one and one for all as they join Barbie's counterpart Ken, a thespian hedgehog named Mr. Pricklepants and a pink, strawberry-scented teddy bear called Lots-o'-Huggin' Bear to plan their great escape.

## TWILIGHT: ECLIPSE

M. 124mins. Romance/Fantasy

As Seattle is ravaged by a string of mysterious killings and a malicious vampire continues her quest for revenge, Bella once again finds herself surrounded by danger. In the midst of it all, she is forced to choose between her love for Edward and her friendship with Jacob - knowing that her decision has the potential to ignite the ageless struggle between vampire and werewolf. With her graduation quickly approaching, Bella has one more decision to make: life or death. But which is which?

## FOOD INC

Thur 29 - Wed 4

PG. 94mins  
12:20, 5:45pm

## GET HIM TO THE GREEK

Thur 29 - Fri 30  
Sat 31  
Sun 1 - Wed 4

MA15+. 109mins  
10:40am, 3:15, 7:30pm  
3:15, 7:30pm  
10:40am, 3:15, 7:30pm

## I AM LOVE

Thur 29 - Wed 4

MA15+. 120mins  
12:50, 7:45pm

## INCEPTION

Thur 29 - Wed 4

M. 148mins  
10:10am, 2:25, 6:30pm

## KNIGHT & DAY

Thur 29 - Wed 4

M. 109mins  
10:00am, 1:10, 8:25pm

## PREDATORS

Thur 29 - Wed 4

MA15+. 107mins  
5:15pm

## TOY STORY 3

Thur 29 - Wed 4

G. 102mins  
3:00pm

## TWILIGHT SAGA: ECLIPSE

Thur 29 - Wed 4

M. 124mins  
3:30, 6:00pm

To avoid congestion please try to arrive early to evening sessions.

### TICKET PRICES:

ADULTS \$14.00 / CONC \$12.50 CHILDREN (3-14yrs) / SENIORS \$10.00

**CHEAP TUESDAYS:** All feature films \$8.50



# 'Throwing Out The Lies With the Birth Water'

A Documentary by Rani O'Keefe  
**SPECIAL PREVIEW**

Sat 31st July 10.30am / Tickets \$10

